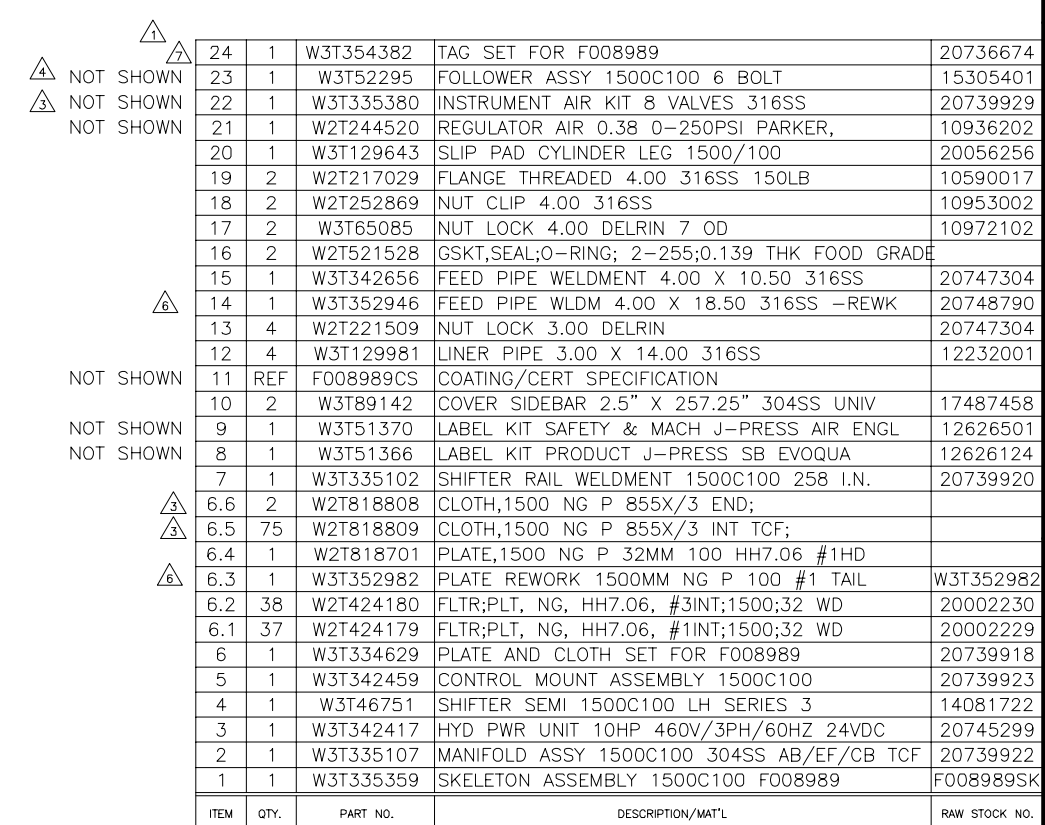
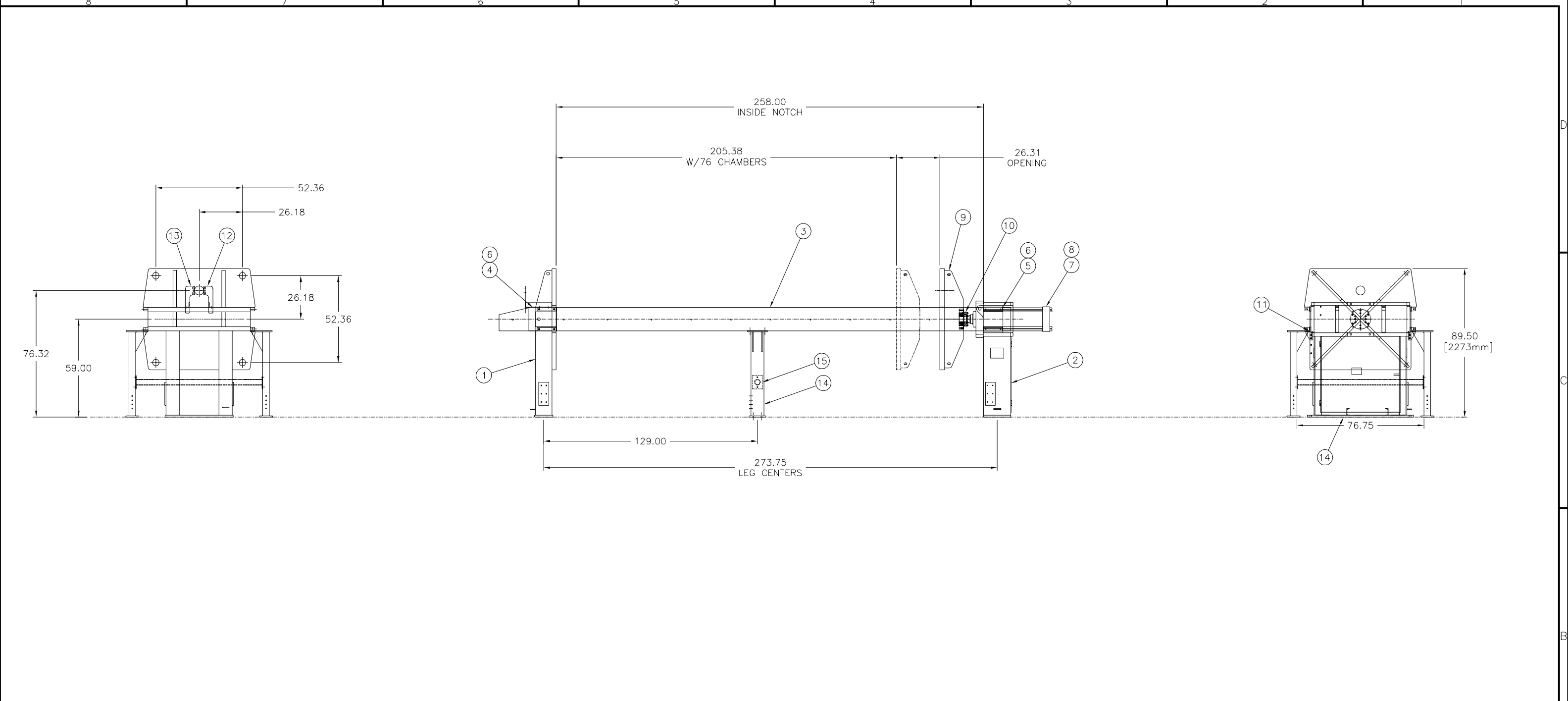


THIRD ANGLE PROJECTION		DRAWN PER ASME Y14.5M UNLESS OTHERWISE SPECIFIED ALL DIMENSIONS ARE IN INCHES AND TOLERANCES TO BE AS FOLLOWS.		FABRICATION		MACHINE		ALL WELD SYMBOL DIMENSIONS ARE MINIMUM. DIMENSIONS IN [mm] ARE MILLIMETERS. DO NOT SCALE DRAWING.		STD: BORDER-0106-22X34D		BAR = 1" AT PLOT SCALE	

[illegible]



- GENERAL ASSEMBLY NOTES:
- CLEAN OUT TAPPED HOLES AFTER PAINT/BLAST OPERATIONS, CHASE OUT WITH TAP AND COMPRESSED AIR AFTER PAINT OPERATIONS.
 - USE ANTI-SEIZE COMPOUND ON ALL STAINLESS HARDWARE AND LOCTITE ON ALL NON STAINLESS HARDWARE.
 - PLUG UNUSED HOLES WITH PLASTIC CAP PLUGS AS REQUIRED.
 - REFER TO PROJECT DOCUMENTATION FOR SPECIAL NOTES, SURFACE PREPARATION AND FINISH REQUIREMENTS.
 - TORQUE ALL HARDWARE $\phi 3/8"$ [8mm] AND LARGER UNLESS OTHERWISE NOTED. FOR BOLTING FRP OR PLASTIC, VERIFY MANUFACTURER'S TORQUE RECOMMENDATIONS. FOR ALL OTHER MATERIAL, REFERENCE DOC00112.

APPROX. WEIGHTS:

- SIDEBAR - 5656 LBS (SET)
- CYL BRKT - 3135 LBS
- HD BRKT - 4587 LBS
- FOLLOWER - 3700 LBS
- CYLINDER - 1717 LBS

15	1	W3T44021	SUPPORT WELD PIPE 1500C100 HRS	15591401
14	2	W3T47406	SUPPORT WELD SIDEBAR W/DT 1500C100	15589701
13	1	W3T129654	SUPPORT WELDMENT 4.00 FEED PIPE	20172617
12	1	W3T129657	SUPPORT WELDMENT 4.00 FEED PIPE	20172619
11	2	W3T51232	STOP ANTI-ROTATE 3.00 SIDEBAR	12368101
10	1	W3T34646	COUPLING, ROD END 1500C100 6 HOLE	14704501
9	1	W3T129602	FOLLOWER MACHINING 1500C100 TOP DEF	20172915
8	4	W2T248009	SCREW HEXHD 1.250-7x6.50 GR5ZC	10134430
7	1	W2T237421	CYLINDER,HYD 12"B 30"STRK 4400PSI;	12084207
6	16	W2T248619	SCREW HEXHD 0.750-10x1.25 GR5ZC	10159119
5	2	W3T46159	JOGGLE PLATE 1500/100	12399401
4	2	W3T189588	JOGGLE PLATE SHFT 1500C100 6.62	20355433
3	2	W3T334674	SIDEBAR 1500C100 258.00 I.N.	20739919
2	1	W3T342554	CYL BRKT/LEG WLDM 1500C100 DRIP TRAY UNI	20747301
1	1	W3T342553	HEAD AND LEG WLDM 1500C100 TCF W/GND LUG	20747300

ITEM	QTY.	PART NO.	DESCRIPTION/MAT'L	RAW STOCK NO.
15	1	W3T44021	SUPPORT WELD PIPE 1500C100 HRS	15591401
14	2	W3T47406	SUPPORT WELD SIDEBAR W/DT 1500C100	15589701
13	1	W3T129654	SUPPORT WELDMENT 4.00 FEED PIPE	20172617
12	1	W3T129657	SUPPORT WELDMENT 4.00 FEED PIPE	20172619
11	2	W3T51232	STOP ANTI-ROTATE 3.00 SIDEBAR	12368101
10	1	W3T34646	COUPLING, ROD END 1500C100 6 HOLE	14704501
9	1	W3T129602	FOLLOWER MACHINING 1500C100 TOP DEF	20172915
8	4	W2T248009	SCREW HEXHD 1.250-7x6.50 GR5ZC	10134430
7	1	W2T237421	CYLINDER,HYD 12"B 30"STRK 4400PSI;	12084207
6	16	W2T248619	SCREW HEXHD 0.750-10x1.25 GR5ZC	10159119
5	2	W3T46159	JOGGLE PLATE 1500/100	12399401
4	2	W3T189588	JOGGLE PLATE SHFT 1500C100 6.62	20355433
3	2	W3T334674	SIDEBAR 1500C100 258.00 I.N.	20739919
2	1	W3T342554	CYL BRKT/LEG WLDM 1500C100 DRIP TRAY UNI	20747301
1	1	W3T342553	HEAD AND LEG WLDM 1500C100 TCF W/GND LUG	20747300

THIRD ANGLE PROJECTION

ALL WELD SYMBOL DIMENSIONS ARE MINIMUM. DIMENSIONS IN [mm] ARE MILLIMETERS. DO NOT SCALE DRAWING.

DRAWN PER ASME Y14.5M UNLESS OTHERWISE SPECIFIED ALL DIMENSIONS ARE IN INCHES AND TOLERANCES TO BE AS FOLLOWS.

FABRICATION	MACHINE
.XX ± .06	.XX ± .03
[X ± 2]	.XXX ± .005
< ± 2"	[X ± 1]
	[.X ± .1]
	< ± 1"

2	ADDED ITEM #15, W3T44021	13AUG15	AEF	PEK	PEK	22655
1	ITEM 14 QTY WAS 1	08JUL15	MEM	NTC	NTC	22565
0	RELEASED FOR RELEASED	27MAR15	MEM	NTC	NTC	-

REV	DESCRIPTION	DATE	DWN	CHKD	APVD	ECN
2	ADDED ITEM #15, W3T44021	13AUG15	AEF	PEK	PEK	22655
1	ITEM 14 QTY WAS 1	08JUL15	MEM	NTC	NTC	22565
0	RELEASED FOR RELEASED	27MAR15	MEM	NTC	NTC	-

COMPANY CONFIDENTIAL

THIS DOCUMENT AND ALL INFORMATION CONTAINED HEREIN ARE THE PROPERTY OF EVOQUA AND/OR ITS AFFILIATES. THE DESIGN CONCEPTS AND INFORMATION CONTAINED HEREIN ARE PROPRIETARY TO EVOQUA AND ARE SUBMITTED IN CONFIDENCE. THEY ARE NOT TRANSFERABLE AND MUST BE USED ONLY FOR THE PURPOSE FOR WHICH THE DOCUMENT IS EXPRESSLY LOANED. THEY MUST NOT BE DISCLOSED, REPRODUCED, LOANED OR USED IN ANY OTHER MANNER WITHOUT THE EXPRESS WRITTEN CONSENT OF EVOQUA. IN NO EVENT SHALL THEY BE USED IN ANY MANNER DETRIMENTAL TO THE INTEREST OF EVOQUA. ALL PATENT RIGHTS ARE RESERVED. UPON THE DEMAND OF EVOQUA, THIS DOCUMENT, ALONG WITH ALL COPIES AND EXTRACTS, AND ALL RELATED NOTES AND ANALYSES, MUST BE RETURNED TO EVOQUA OR DESTROYED, AS INSTRUCTED BY EVOQUA. ACCEPTANCE OF THE DELIVERY OF THIS DOCUMENT CONSTITUTES AGREEMENT TO THESE TERMS AND CONDITIONS.

DESIGNER	DATE
MEM	25MAR15
CHECKER	DATE
KWH	25MAR15
ENGINEER	DATE
NTC	25MAR15
MANAGER	DATE
PEK	25MAR15

FILE: F008644SKrev1

SCALE: NONE

TITLE: SKELETON ASSEMBLY 1500C100 F008989

CLIENT:

WATER TECHNOLOGIES

HOLLAND, MI
TEL: 616-772-9011

PROJECT	CODE	DRAWING	SHEET	REV
F008989	W3T335359	F008989SK	1 OF 1	2

